

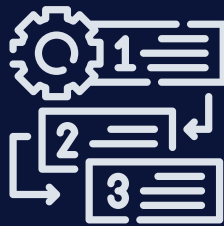


Develop and institutionalize new processes for assessing citizen needs, and plan governance reforms that are responsive to the needs of citizens.



Test and implement reforms that improve government service delivery, with a focus on the most vulnerable.

Improve the management of the national reform process to focus on prioritizing, planning and monitoring reforms to best serve citizens



### Support to Ukraine's Reforms for Governance

The SURGe program applies international best practices and engages Ukrainian experts to foster capacity and enable sustainable progress toward good governance. Through a series of Reform Projects they support the government of Ukraine to make its systems and services responsive to the needs of citizens, with a focus on the country's most vulnerable, especially women and girls.

This work extends to central government planning by building capacity for results- based management, gender equality and social inclusion at the national level.



In partnership with  
**Canada**

Alinea is an international development consultancy whose name means "introducing new ideas," which is how our team of in-house technical experts strategizes, designs and delivers smart solutions to meet the world's changing challenges.



**GOVERNANCE  
PEACE &  
SECURITY**

**UKRAINE**



[alineainternational.com/SURGe](http://alineainternational.com/SURGe)



<https://www.facebook.com/SURGeUkraine>



[@SurgeUkraine](https://twitter.com/SurgeUkraine)

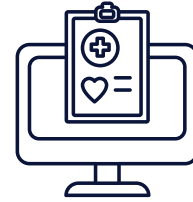
## CRIMINAL JUSTICE



SURGe initiated and developed the probation model that combined supervision with support and rehabilitation services for both juvenile and adult convicts, and helped probation become a legitimate alternative to sending people to prison.

SURGe helped to develop and roll out the Unified Register of Convicts and Detainees as a case management system to enable prompt processing of data to make evidence-based decisions.

## E-HEALTH



SURGe supported the development of the first national electronic healthcare system to make healthcare more accessible and cost-effective.

eHealth is used for managing medical data among doctors, patients, and medical institutions, and enables transparent funding for medical personnel based on the number of patients served.

This IT system is the backbone of many healthcare programs such as electronic medical records, prescriptions, specialist referrals, sick leaves, and vaccinations.

## CHILD PROTECTION



SURGe supported the child welfare system reform to prevent children from entering institutional care and to ensure that each child is raised in a family or family-like environment.

Since Russia's war against Ukraine has put institutionalized children and those from socially disadvantaged families in increased danger, SURGe extended its work to provide effective mechanisms for safe evacuation and monitoring and children's temporary relocation.

## COMMUNITY-LED INCLUSIVE RECOVERY



CLIR provides expert support to damaged communities to plan for a sustainable and inclusive social and economic recovery. This initiative deploys teams including local experts and stakeholders to build capacity and retain expertise and knowledge.

CLIR is a part of the Community Support Team, aimed at uniting and coordinating communities' efforts to ensure the fastest possible inclusive recovery and development of Ukrainian communities.



[alineainternational.com/](http://alineainternational.com/)



[facebook.com/Alinea.international](https://facebook.com/Alinea.international)



[@Alinea\\_Ideas](https://twitter.com/Alinea_Ideas)



[instagram.com/alinea\\_ideas](https://instagram.com/alinea_ideas)



[linkedin.com/company/alinea-international/](https://linkedin.com/company/alinea-international/)